

ALLEGHENY NATIONAL FOREST

CHAPMAN STATE PARK  
WARREN COUNTY

To Clarendon & US 8  
Private Land

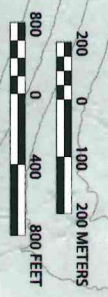
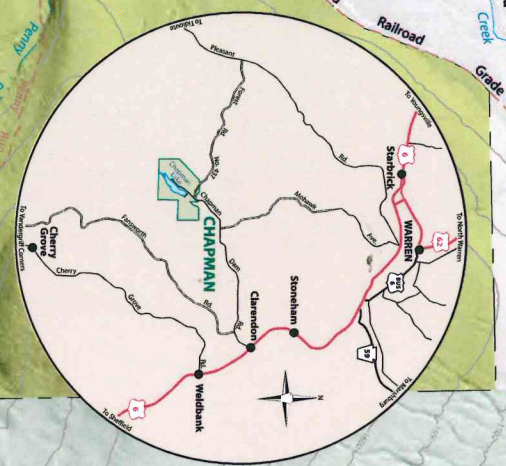
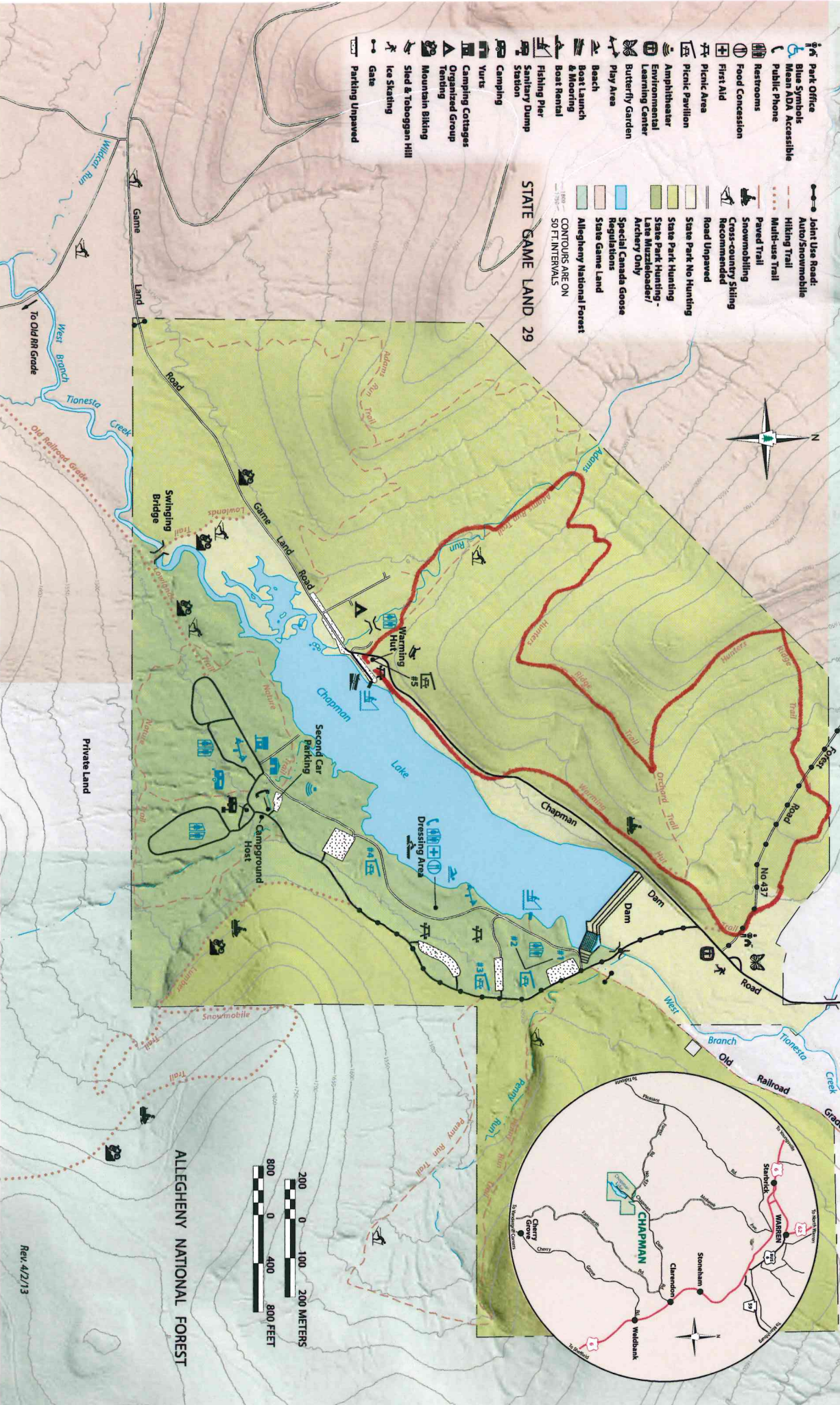
To PA 327



- Park Office
- Blue Symbols
- Wheelchair Accessible
- Public Phone
- Restrooms
- Food Concession
- First Aid
- Picnic Area
- Picnic Pavilion
- Amphitheater
- Environmental Learning Center
- Butterfly Garden
- Play Area
- Beach
- Boat Launch & Mooring
- Boat Rental
- Fishing Pier
- Sanitary Dump Station
- Camping
- Yurt
- Camping Cottages
- Organized Group Tenting
- Mountain Biking
- Sled & Toboggan Hill
- Ice Skating
- Gate
- Parking Unpaved

- Joint Use Road:
  - Auto/Snowmobile
  - Hiking Trail
  - Multi-use Trail
  - Paved Trail
  - Snowmobiling
  - Cross-country Skiing
  - Recommended
  - Road Unpaved
  - State Park No Hunting
  - State Park Hunting - Late Muzzleloader/ Archery Only
  - Special Canada Goose Regulations
  - State Game Land
  - Allegheny National Forest
- CONTOURS ARE ON 50 FT. INTERVALS

STATE GAME LAND 29



ALLEGHENY NATIONAL FOREST

Rev. 4/2/13